

Blister Tactile Paving:

The blister tactile surface should be installed in the absence of an upstand at both controlled and uncontrolled crossing points:

- where the footway has been dropped flush with the carriageway or;
- where the carriageway has been raised to the level of the footway.

Controlled Crossings: At controlled crossings the pedestrian is able to establish priority over vehicular traffic. For the purposes of this advice the following crossing types are described as controlled: Zabras, Toucans and Traffic signalised junctions with pedestrian phases. The RED blister surface should be used at controlled crossings only.

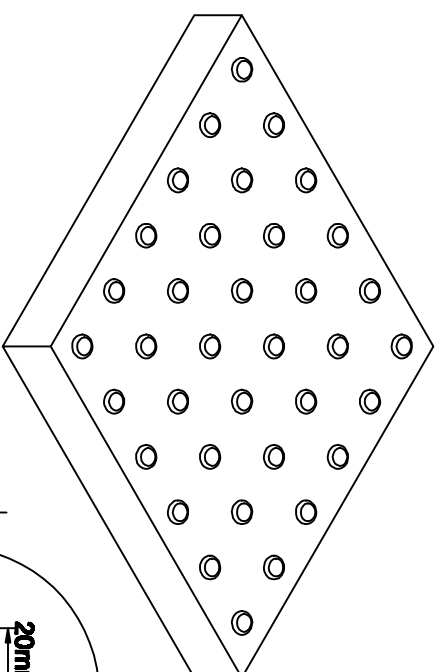
Uncontrolled Crossings: At uncontrolled crossings the pedestrian does not have priority over vehicular traffic and must make a decision about whether it is safe to cross. For the purposes of this advice the following locations are described as uncontrolled crossings: side road crossings, busy crossovers (vehicle crossings), crossings away from junctions, kerb to kerb flat top road humps, signal controlled junctions without pedestrian phases (traffic lights), including those where studs indicating a pedestrian crossing place are provided. The blister surfaces should be BUFF or any colour (other than red) which provides a contrast with the surrounding footway surface.

Partially sighted people will be assisted by strong colour contrast this can be achieved by painting or marking the kerb edge white/yellow.

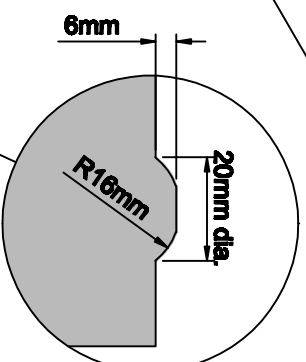
Ref: *Guidance on the use of tactile paving UK: fig. 28*

BS. 8300.

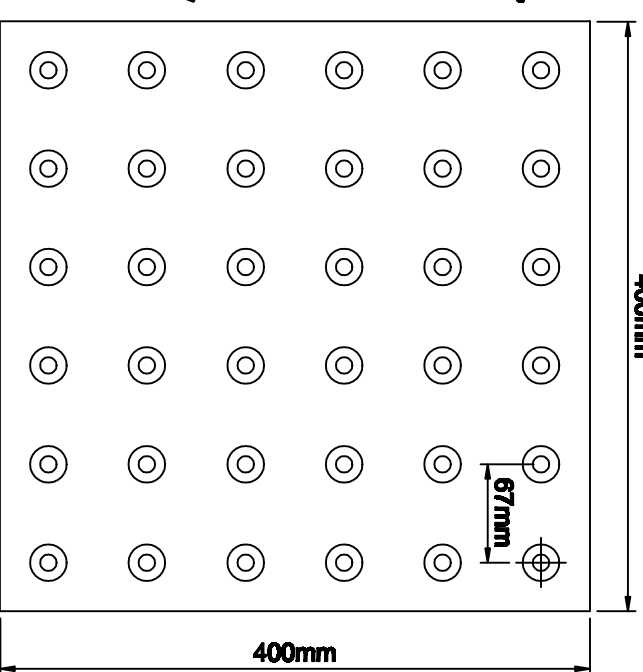
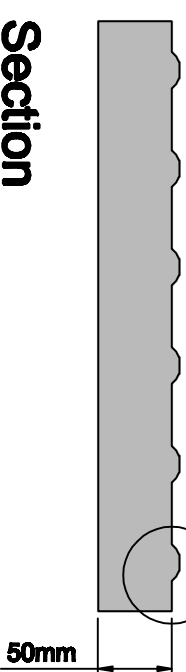
BS. 7997: *Products for tactile paving surface indicators - Specification (2003).*



Blister Tactile



Section



Plan

Corduroy Tactile Paving:

Can be used for any situation (except for pedestrian crossings) where visually impaired people need to be warned of a hazard and advised to proceed with caution.

Used to warn visually impaired people of the presence of steps and is also used where a footway joins a shared route, i.e. cycle lanes.

Comprises of rounded bars running transversely across the direction of travel.

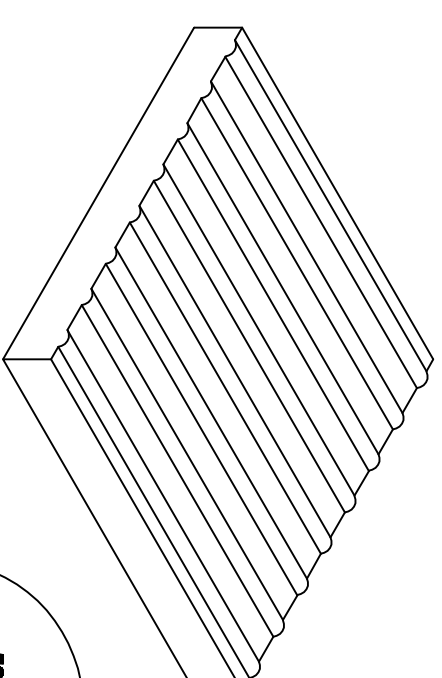
Should be provided in a contrasting colour to the surrounding area but it should NOT be RED, as red is restricted to blister surface at controlled crossings.

Ref: *Guidance on the Use of Tactile Paving' Dept. of Transport, Scotland.*

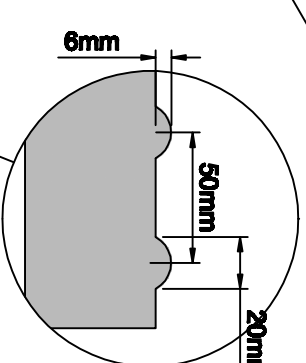
BS. 8300.

BS. 7997 *Products for tactile paving surface indicators - Specification (2003).*

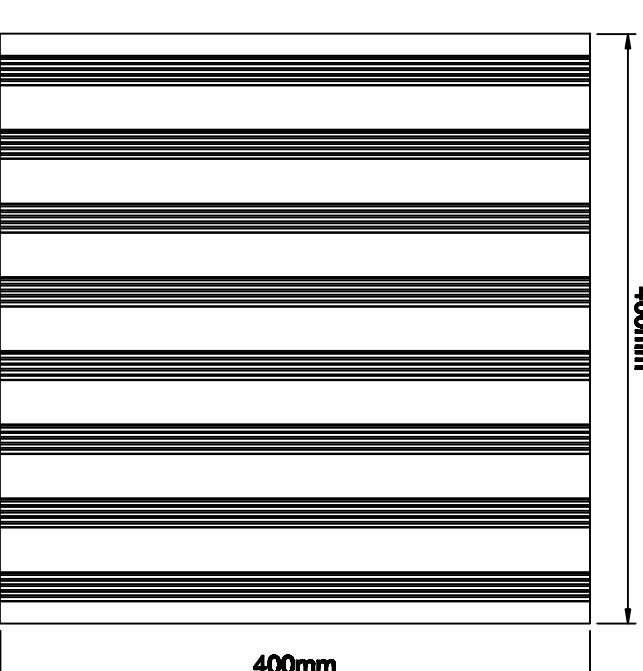
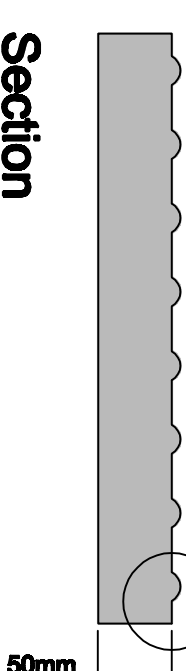
For details see, *Toucan Crossing detail and Steps/Ramps detail drawings.*



Corduroy Tactile



Section



Plan